

BEGIN YOUR JOURNEY





TOP 3 REASONS **TO CHOOSE SHERIDAN COLLEGE**

LOCATION

CAREER OPPORTUNITIES

AFFORDABILITY



Shawna LaCoy

Hometown: Hayward, WI

**Majors: Ag, Ag Business, Animal Science,
Rangeland Management**

"The instructors and staff are absolutely awesome. I started here not really knowing what I wanted to do. Because of their support and guidance, I will have four associate degrees at graduation this year and plan to eventually get my master's degree! At a larger school, I might have fallen through the cracks and just not graduated."



STATE-OF-THE-ART FACILITIES
HANDS-ON LEARNING



AGRICULTURE

Agriculture
Agricultural Business
Agritourism
Animal Science
Farrier Science
General Agriculture
Plant Science
Rangeland Management

Mars Agriculture Center:

- High-Tech Classrooms
- Animal Science Lab
- Soils and Agroecology Lab
- Herbarium
- Four Greenhouses
- Professional Commodities Trading Classroom
- 2.5-Acre Outdoor Learning Lab



Tyler Holloway
Hometown: Sheridan, WY
Major: Agriculture Business

"I gained so much knowledge from my instructors because everything was a hands-on experience. Not only did we feed livestock, but we broke down their diet to make sure they had balanced nutrients. We spent days in the greenhouse growing produce for the community and lab testing the soils to create high yields. I have always wanted to become an Ag teacher, and after completing my degree at Sheridan College, I feel like I am way more comfortable answering questions from local producers or students."

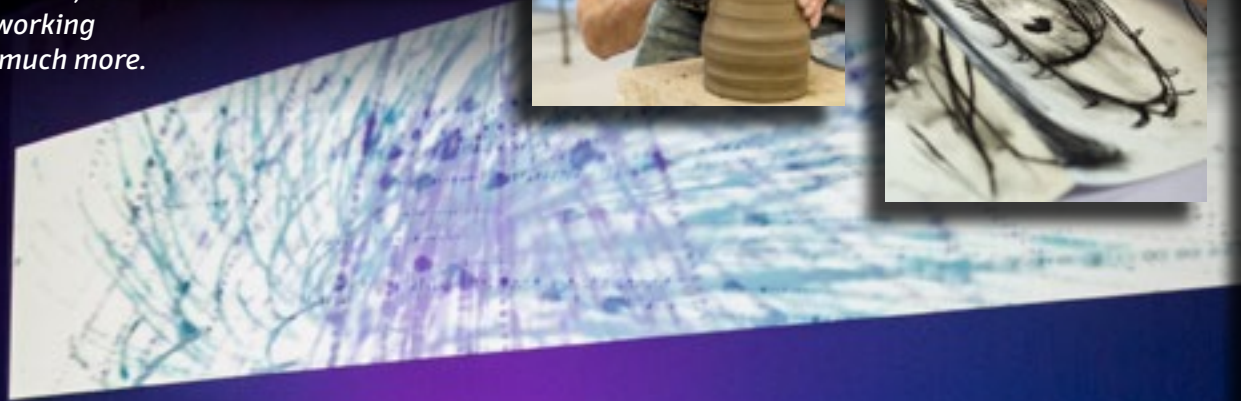
**Harvesting Hops in our Outdoor Learning Lab
at the Mars Agricultural Center**



ARTS

Our Music, Theater, and Art students are only limited by their imaginations as to what they can create in our Whitney Center for the Arts. Students have access to kilns, metal sculpture casting, student art galleries, sound-engineered performance space, performing ensembles, a concert hall, proscenium stage with working theatre & dance productions, and so much more.

Art
Arts Administration
Graphic Design
Music
Music Technology
Theatre & Dance
Visual Arts



**Music Ensemble of Audio Technology
(M.E.A.T.)**



Tyson Bjornestad

Hometown: Belle Fourche, SD

Major: Music Technology

"The Music Tech program has been a great experience. It's a lot of fun to be able to come up with your own ideas and compose with other students in the class. The instructors are very interactive and will help you in just about anyway you need. Everybody here wants you to succeed."

BUSINESS & COMPUTERS

Business

Computer Networking Administration

Computer Science

Cyber Security

Entrepreneurship

IT Support Technician





ENGINEERING SCIENCE MATH

Biology
Engineering
General Science
Mathematics
Pre-Professional
Surveying Technology



HUMANITIES, EDUCATION & SOCIAL SCIENCES

Addictions Practitioner	History
Criminal Justice	Human Services
Education	Psychology
English	Social Science
General Studies	



HEALTH SCIENCES

Athletic Training
Dental Hygiene
Exercise Science
Health Science
Massage Therapy
Nursing

Additional Career Training

Medical Assistant
Certified Nursing Assistant (CNA)
Emergency Medical Responder



Mary Hogarty

**Hometown: Sheridan, WY
Nursing student**

"As a mom, Sheridan College has been flexible to my lifestyle. The classes are available during the day while my kids are at school, and my professors all have kids, so they understand the pressures and are super understanding of the things I must do. It's been a big sacrifice for my family to continue my education, but knowing I can leave and immediately get a job makes it worth it."





Nick Larson

Hometown: Gillette, WY

Major: Machine Tool

"The machine tool program at Sheridan College has a lot of CNC machines, manual aids, manual mills and CNC mills. Because we have all this amazing technology, I was able to go out and enter the workforce with a base knowledge that was better than some other graduates from other machining schools in the state. It truly gives us an edge over other programs."



CAREER & TECHNICAL

- Carpentry Apprenticeship
- Construction Technology
- Culinary Arts & Hospitality
- Diesel Technology
- Event Planning

- Hospitality & Tourism Management
- Industrial Technology
- Machine Tool Technology
- Welding Technology

Students have access to industry-standard equipment in our newly renovated Technical Education Center.

THIS IS YOUR CAMPUS





A person stands on a large rock in the middle of a calm lake. The person's arms are raised in a 'V' shape, and they are wearing a light-colored shirt and shorts. The background features a range of blue mountains under a vast sky filled with large, white and grey clouds. Sunlight breaks through the clouds, creating a bright spot directly behind the person. The water in the foreground shows gentle ripples and a small wake from the rock.

ADVENTURE BEGINS HERE



THE BIGHORN MOUNTAINS

ARE YOUR BACKYARD



FINANCIAL AID & SCHOLARSHIPS

**WE'VE AWARDED OVER \$6 MILLION
ANNUALLY IN FINANCIAL AID!**



25 ACT score earns you
**FREE IN-STATE
TUITION + FEES!**

Some restrictions apply. Please visit www.sheridan.edu/financialaid for details.

**Apply for FAFSA at www.fafsa.ed.gov
003930 FAFSA SCHOOL CODE**



Liz Caudle

Hometown: Cody, Wyoming

Major: Dental Hygiene

"When researching schools, I fell in love with the hands-on experience, the facilities, and the instructors at Sheridan College. I realized graduates from Sheridan were entering the workforce almost immediately after graduation because of how good the program was, and that's what drew me in the most."

Estimated Yearly Cost of Attendance 2022-2023

College Expenses	In-State	WUE**	Non-WUE States & International
Tuition & Fees	\$4,830	\$6,420	\$11,130
Books & Supplies	\$1,800	\$1,800	\$1,800
Basic Room & Board*	\$7,434	\$7,434	\$7,434
Total	\$14,064	\$15,654	\$20,364

Costs are based on full-time student (15 credit hours) living on campus. Costs are subject to change. Additional fees vary based on academic program.

*Room and Board starts at a standard cost of \$7,434. Upgrades to room or meal plan will incur additional cost.

**WUE: Students from states participating in Western Undergraduate Exchange qualify for reduced non-resident tuition. WUE states include Alaska, Arizona, California, Colorado, Hawaii, Idaho, Montana, Nevada, New Mexico, North Dakota, Oregon, South Dakota, Utah, Washington, and U.S. Pacific Territories and Freely Associated States. Note: Nebraska students qualify for WUE tuition rates at Sheridan College. For more information visit www.wiche.edu.



WELCOME HOME

Save Time & Money Living on Campus



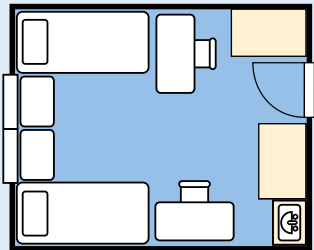


Convenient, affordable, and comfortable.

Our 20 on-campus residence halls are designed to provide you the best home-away-from-home experience. Living on campus also helps students get involved in activities, make new friends, and always be within walking distance to class or a great meal.

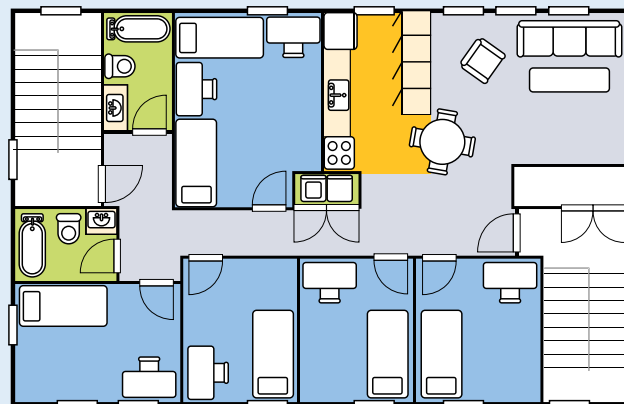
Traditional Living

Typical first-year housing option



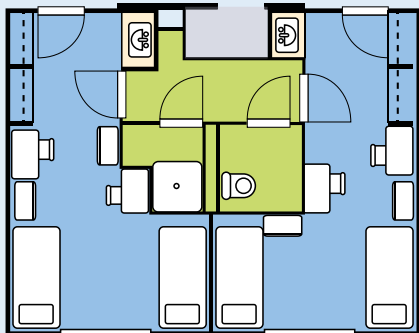
Apartment-Style Living

Typical second-year housing option



Suite-Style Living

Typical first-year housing option



Check out our housing options and 360° room views online at:
www.sheridan.edu/housingatasc



Get Connected!

CAMPUS LIFE



JOIN THE FUN, THERE'S ALWAYS SOMETHING HAPPENING ON CAMPUS

Thorne-Rider Campus Center is the perfect spot to meet friends. Whether you are craving pizza, tacos, a home-cooked meal, or the perfect sandwich, the Campus Center's seven food stations provide plenty of options. After your meal, play a game of pool, darts or enjoy a free live performance by one of the many musicians and comedians who visit campus throughout the year.



Thorne-Rider Campus Center

400+
ACTIVITIES
ON CAMPUS
EACH YEAR



Thorne-Rider Campus Center

Movie Nights, Musicians, Comedians, Outdoor Adventures, Game Nights, Student Clubs, Dances



Dennis Zezas

Hometown: Buffalo, WY

Major: Cyber Security, Computer Networking Admin.

"I love living on campus. It is really affordable compared to other housing options, and it is nice to have all of your classes and campus dining just a short walk away. If I need help with an assignment, a lot of times I can just drop by my instructor's office for help. Plus, it's easier to meet people and get involved."





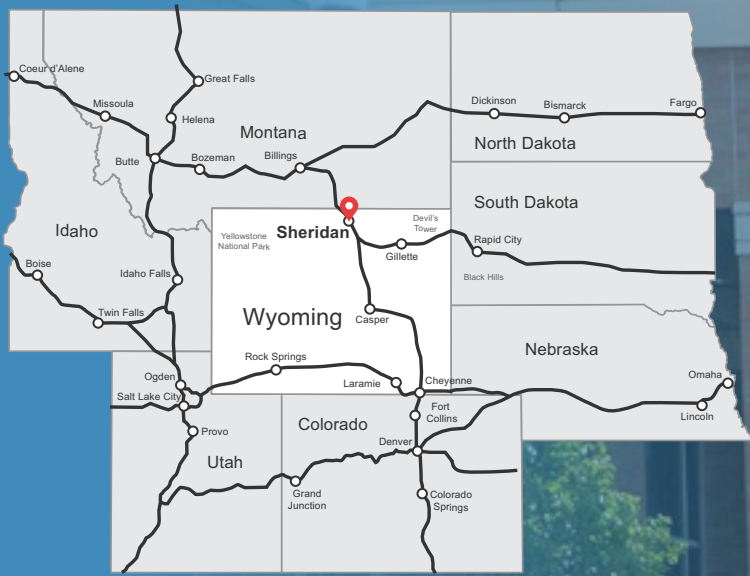
NEXT 3 STEPS

#1 VISIT SHERIDAN COLLEGE

#2 APPLY

**#3 EXPLORE FINANCIAL AID OPTIONS AT
WWW.SHERIDAN.EDU/FINANCIALAID**





VISIT SHERIDAN COLLEGE

Do you have questions?

Contact us!

admissions@sheridan.edu

www.sheridan.edu/visitsc



#sheridancollegewy

Northern Wyoming Community College District is accredited by the Higher Learning Commission (hlcommission.org), a regional accreditation agency recognized by the U.S. Department of Education.

Northern Wyoming Community College District prohibits discrimination in employment, educational programs and activities on the basis of race, national origin, color, creed, religion, sex, pregnancy, age, disability, veteran status, sexual orientation, gender identity, or any other class protected under state and federal law. The District also affirms its commitment to providing equal opportunities and equal access to its facilities. Inquiries concerning Title VI, Title VII, Title IX, Section 504, and the Americans with Disabilities Act may be referred to the Assistant Vice President for Human Resources, Jennifer McArthur, NWCCD's Title IX and Section 504 Coordinator, Sheridan College, Griffith Memorial Building, Room 141D, 1 Whitney Way, Sheridan, WY 82801; 307-675-0505. Inquiries also may be made to the Office for Civil Rights, U.S. Department of Education, Federal Building, Suite 310, 1244 Speer Boulevard, Denver, CO 80204-3582; 303-844-3417; or TDD 303-844-3417.



1 WHITNEY WAY · SHERIDAN, WYOMING 82801

WWW.SHERIDAN.EDU

888-675-0505

